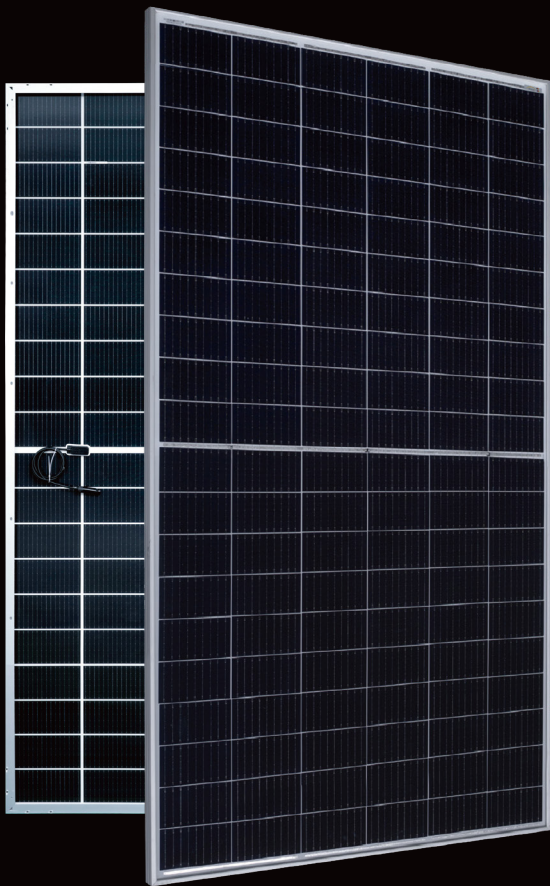




# AESOLAR

since 2003



# COMET

enrich your energy yield

**30**  
years  
Performance  
Warranty

**15**  
years  
Product  
Warranty

## 615W-635W

### AE TME-120BDS Series

SILICON HETEROJUNCTION PV MODULES  
HALF-CUT CELLS • BIFACIAL • DOUBLE-GLASS

[www.ae-solar.com](http://www.ae-solar.com)

Ver. 24.1.1



HALF  
CELLS



CELL  
SIZE



LID  
RESISTANT



PID  
RESISTANT



SALT CORROSION  
RESISTANT



SAND  
RESISTANT



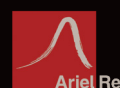
AMMONIA  
RESISTANT



HIGHLY STABLE  
AND TOUGH



IEC 61215 IEC 61730  
Regular Production Surveillance  
[www.tuv.com](http://www.tuv.com)  
ID 1111207249



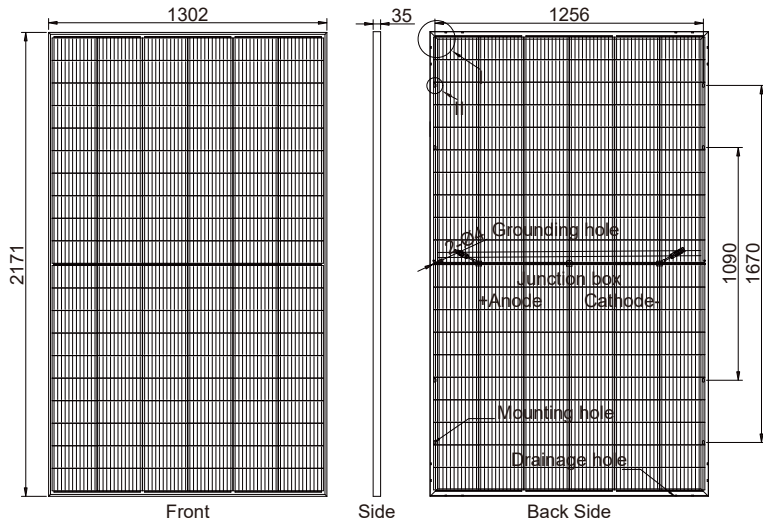
# AE TME-120BDS Series 615W-635W



SILICON HETEROJUNCTION PV MODULES  
HALF-CUT CELLS • BIFACIAL • DOUBLE-GLASS

## Mechanical and design specification

Cell type	Silicon Heterojunction technology, Half-cut cells, 210 mm
No. of cells	120
Bifaciality	80 ± 5%
Front cover	2.0 mm glass, high transmission, AR coated, tempered
Encapsulation	POE
Back cover	2.0 mm white glazed glass, tempered
Junction box	IP68 rated, 3 Bypass Diodes
Frame	35 mm anodized Aluminium alloy
Cable	1 x 4 mm <sup>2</sup> , 350 mm length or customized
Connectors	MC 4 / MC 4 compatible
Dimension	2171 mm x 1302 mm x 35 mm
Weight	35.5 kg
Hail resistance	Max. Ø 25 mm at 23 m/s
Wind load	2400 Pa or 244 kg/m <sup>2</sup>
Snow load	5400 Pa or 550 kg/m <sup>2</sup>

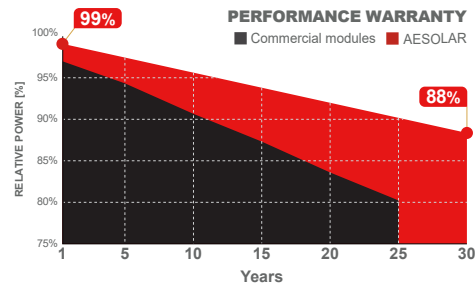
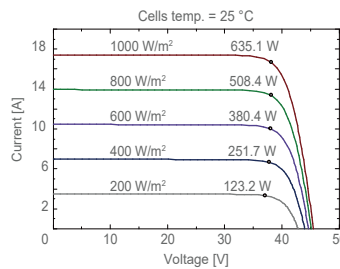
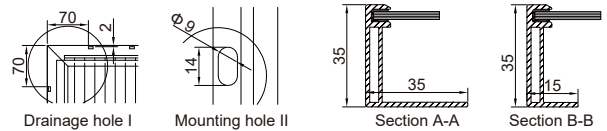


## Packaging information

Packaging configuration	31 pcs / pallet
Loading capacity	558 pcs / 40 HQ
Size / Pallet	1315 mm x 1100 mm x 2330 mm (upright)
Weight	1162 kg / pallet

## Temperature ratings

Operating temperature	(°C)	-40 to +85
Temp.coefficient of P <sub>max</sub>	(%/°C)	-0.26
Temp.coefficient of V <sub>oc</sub>	(%/°C)	-0.24
Temp.coefficient of I <sub>sc</sub>	(%/°C)	0.040
Nom. operating temp. NOCT	(°C)	44 ± 2



## Electrical specifications (STC\*): AE615TME-120BDS AE620TME-120BDS AE625TME-120BDS AE630TME-120BDS AE635TME-120BDS

Parameter	Symbol	AE615TME-120BDS	AE620TME-120BDS	AE625TME-120BDS	AE630TME-120BDS	AE635TME-120BDS
Nominal Max. Power	P <sub>max</sub> (Wp)	615	620	625	630	635
Maximum operating voltage	V <sub>MPP</sub> (V)	37.53	37.69	37.86	38.03	38.19
Maximum operating current	I <sub>MPP</sub> (A)	16.39	16.45	16.51	16.57	16.63
Open-circuit voltage	V <sub>oc</sub> (V)	44.77	44.95	45.13	45.30	45.48
Short-circuit current	I <sub>sc</sub> (A)	17.19	17.25	17.31	17.37	17.43
Module efficiency	η (%)	21.76	21.93	22.11	22.29	22.46
Power tolerance	(W)	0~+5				
Maximum system Voltage	(V)	1500				
Maximum series fuse rating	(A)	35				

\*STC: Standard test conditions (Irradiance 1000 W/m<sup>2</sup>, Cell temperature 25°C and air mass of AM1.5), measurement tolerance P<sub>max</sub>: ±3%

## Electrical specifications (NMOT\*): AE615TME-120BDS AE620TME-120BDS AE625TME-120BDS AE630TME-120BDS AE635TME-120BDS

Parameter	Symbol	AE615TME-120BDS	AE620TME-120BDS	AE625TME-120BDS	AE630TME-120BDS	AE635TME-120BDS
Nominal Max. Power	P <sub>max</sub> (Wp)	461	465	468	472	476
Maximum operating voltage	V <sub>MPP</sub> (V)	35.14	35.33	35.49	35.64	35.80
Maximum operating current	I <sub>MPP</sub> (A)	13.12	13.16	13.21	13.26	13.30
Open-circuit voltage	V <sub>oc</sub> (V)	41.91	42.12	42.31	42.50	42.69
Short-circuit current	I <sub>sc</sub> (A)	13.75	13.80	13.85	13.90	13.94

\*NMOT: Normal Module Operating Temperature (Irradiance 800 W/m<sup>2</sup>, Ambient temperature 20°C, air mass of AM1.5 and wind speed of 1 m/s)

The specifications and characteristics contained in this datasheet may deviate slightly from our actual products due to the product developments and uncertainty of measurement devices. The specifications included in the datasheet are subject to change without prior notice.