

Deutsche  
Qualität  
Garantiert



# AESOLAR

since 2003

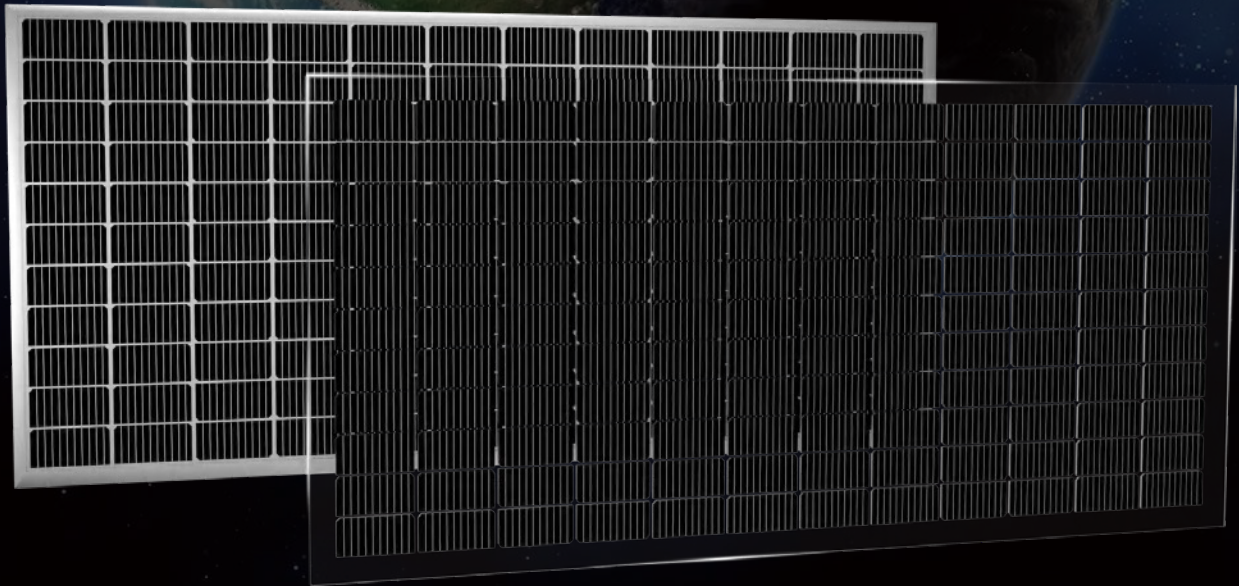
# TERRA

**30**  
years  
Performance  
Warranty

**15**  
years  
Product  
Warranty

## 495W-505W AE MD-L132BD Series

**EXTREME RESISTANCE TO WIND AND SNOW  
HIGHEST BIFACIALITY IN REAL CONDITIONS**



Ver. 24.1.1

[www.ae-solar.com](http://www.ae-solar.com)

**132**

HALF  
CELLS

**182  
mm**

CELL  
SIZE



SHADING  
RESISTANT



NO SELF  
SHADING



LID  
RESISTANT



EXTREME  
RESISTANT  
TO WIND



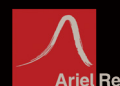
EXTREME  
RESISTANT  
TO SNOW



HIGHLY STABLE  
AND TOUGH



IEC 61215 IEC 61730  
Regular Production Surveillance  
[www.tuv.com](http://www.tuv.com)  
ID 1111207249



# AE MD-L132BD Series 495W-505W



MONO-CRYSTALLINE PV MODULES  
HALF-CUT CELLS • BIFACIAL • DOUBLE-GLASS

## Mechanical and design specification

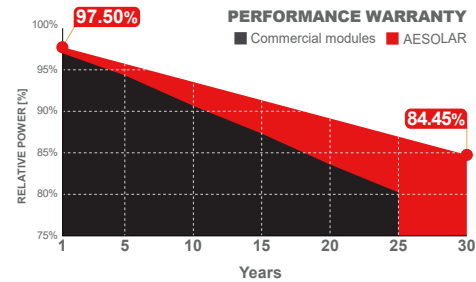
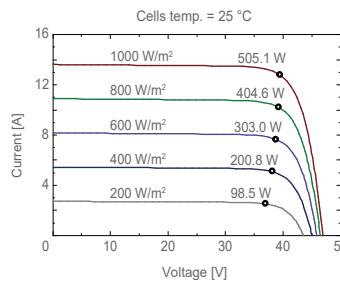
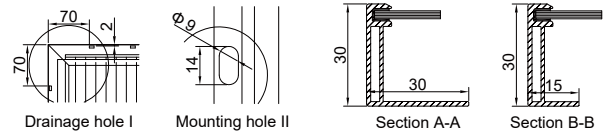
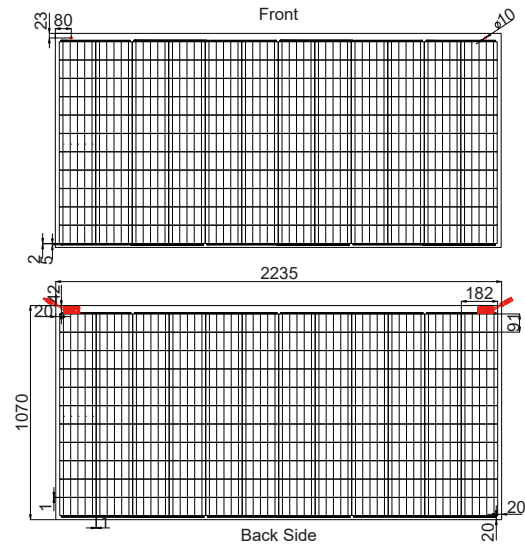
Cell type	Gallium-doped Mono c-Si PERC, Half-cut cells, 182 mm
No. of cells	132
Bifaciality	70 ± 5%
Front cover	2.0 mm glass, high transmission, AR coated, tempered
Encapsulation	POE
Back cover	2.0 mm, high transmission solar glass, tempered
Junction box	IP68 rated, 3 Bypass Diodes
Frame	30 mm anodized Aluminium alloy
Cable	1 x 4 mm <sup>2</sup> , 350 mm length or customized
Connectors	MC 4 / MC 4 compatible
Dimension	1070 mm x 2235 mm x 30 mm
Weight	30.5 kg
Hail resistance	Max. Ø 25 mm at 23 m/s
Wind load	2400 Pa or 244 kg/m <sup>2</sup>
Snow load	5400 Pa or 550 kg/m <sup>2</sup>

## Packaging information

Packaging configuration	36 pcs / pallet
Loading capacity	792 pcs / 40 HQ
Size / Pallet	2125 mm x 1140 mm x 1245 mm
Weight	1138 kg / pallet

## Temperature ratings

Operating temperature	(°C)	-40 to +85
Temp.coefficient of P <sub>max</sub>	(%/°C)	-0.35
Temp.coefficient of V <sub>oc</sub>	(%/°C)	-0.275
Temp.coefficient of I <sub>sc</sub>	(%/°C)	0.045
Nom. operating temp. NOCT	(°C)	45 ± 2



Electrical specifications (STC*):	AE495MD-L132BD	AE500MD-L132BD	AE505MD-L132BD	
Nominal Max. Power	P <sub>max</sub> (Wp)	495	500	505
Maximum operating voltage	V <sub>MPP</sub> (V)	38.79	39.03	39.27
Maximum operating current	I <sub>MPP</sub> (A)	12.76	12.81	12.86
Open-circuit voltage	V <sub>oc</sub> (V)	46.34	46.64	46.93
Short-circuit current	I <sub>sc</sub> (A)	13.52	13.57	13.62
Module efficiency	η (%)	20.60	20.90	21.10
Power tolerance	(W)		0~+5	
Maximum system Voltage	(V)		1500	
Maximum series fuse rating	(A)		25	

\*STC: Standard test conditions (Irradiance 1000 W/m<sup>2</sup>, Cell temperature 25°C and air mass of AM1.5), measurement tolerance P<sub>max</sub>: ±3%

Electrical specifications (NMOT*):	AE495MD-L132BD	AE500MD-L132BD	AE505MD-L132BD	
Nominal Max. Power	P <sub>max</sub> (Wp)	370	373	377
Maximum operating voltage	V <sub>MPP</sub> (V)	36.20	36.40	36.60
Maximum operating current	I <sub>MPP</sub> (A)	10.21	10.25	10.29
Open-circuit voltage	V <sub>oc</sub> (V)	43.40	43.60	43.80
Short-circuit current	I <sub>sc</sub> (A)	10.82	10.86	10.90

\*NMOT: Normal Module Operating Temperature (Irradiance 800 W/m<sup>2</sup>, Ambient temperature 20°C, air mass of AM1.5 and wind speed of 1 m/s)

The specifications and characteristics contained in this datasheet may deviate slightly from our actual products due to the product developments and uncertainty of measurement devices. The specifications included in the datasheet are subject to change without prior notice.